

LOVISA
OF SWEDEN

OUTDOOR OFFICE 2025





CONTENTS

This Is Us	p. 3
How much of your time do you actually spend indoors?	p. 4
Swedish Production and Sustainable Materials	p. 6
The Bug	p. 8-11
The Whale	p. 12-14
The Ant	p. 15-16
All our different furniture legs	p. 17
Design and Innovation	p. 18
Inspiration and Design Language	p. 19



**THE PLANET IS OUR HUB
THE ECONOMY IS A SPOKE
- NOT THE OTHER WAY AROUND**

We are Lovisa of Sweden, a design studio dedicated to creating a society where people are encouraged and able to spend time outdoors.

Through innovative solutions, we meet the challenges and needs of the future—not only for outdoor office work but for all outdoor activities. With our outdoor office solutions, we make it possible to bring your computer outside during work or study hours without the sun interfering with your screen.

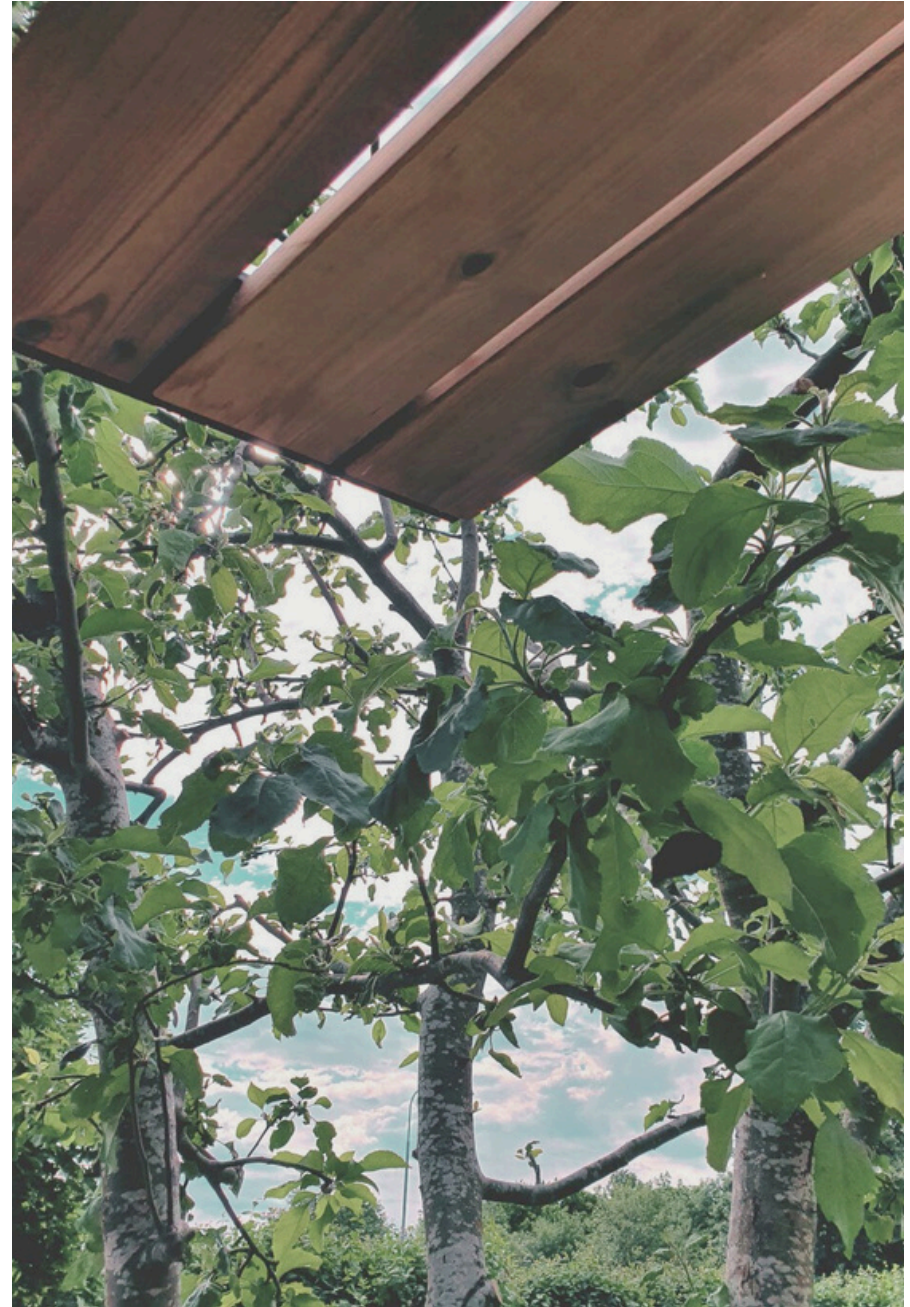
For us, design and innovation development are our mission, and together with a sustainable and holistic approach, they form the core of our business.

HOW MUCH OF YOUR TIME DO YOU ACTUALLY SPEND INDOORS?

We are spending more time indoors than ever before, which has led to a significant rise in stress-related illnesses. The lack of recovery time, which can be achieved through sleep and outdoor activities, is a major contributing factor. Poor work environments, vitamin D deficiency, and stress are leading to high levels of sick leave, which harms both a company's reputation and productivity. Spending time outdoors provides fresh air and vitamin D, which boosts well-being, productivity, and creativity. Sleep quality improves, depression and anxiety are reduced, and stress tolerance increases. Employers can now measure presence due to good health rather than absences due to illness, making them more attractive in the job market.

Sun protection promotes health by shielding people from direct sunlight, which is particularly important for patients with malignant melanoma. Outdoor spaces also offer an alternative during pandemics, as infections are less likely to spread outdoors. Additionally, there is no need to heat, cool, or light up offices and classrooms when they move outside, reducing the need for maintenance such as cleaning, which becomes much simpler outdoors.

In the research report "Outdoor is the New Indoor" (Toivanen, 2019, Ph.D., labor researcher, and sociology professor), Toivanen explains that Swedes spend as much as 80-90% of their lifetime indoors.





"Measure well-being attendance instead of sick leave and become an attractive employer."

Investing in outdoor offices can:

- Attract customers and employees
- Strengthen a sustainability profile
- Lead to healthier employees, reducing sick leave
- Boost creativity and productivity, strengthen your immune system, and lower stress levels by spending more time outdoors

SWEDISH PRODUCTION AND SUSTAINABLE MATERIALS

We have local and small-scale Swedish production with a minimal number of transports.

The wooden parts are made from heat-treated pine sourced from Swedish PEFC-certified forests and, from 2025, even Nordic Swan-labeled forests. Heat-treated wood has a longer lifespan than wood treated with chemicals, and it's almost maintenance-free. Simply washing the furniture annually is sufficient, and if you wish to preserve the golden-brown color, it can be oiled with an ecological colored oil.

We use steel with an undercoating that is zinc- and VOC-free. On top of that, our furniture's is powder-coated for minimal environmental impact.

Our products are designed to be easily repaired, cleaned, and maintained so that they last for generations. Few components and visible craftsmanship make it possible.

We can proudly say that we are genuinely committed to sustainability.



OUR PRODUCT FAMILY

THE BUG, THE ANT AND THE WHALE

LOVISA
OF SWEDEN

THE BUG

Roof

All our products have excellent sun protection. With this furniture, you can adjust the chair to follow the sun, ensuring that you always have shade over you and your computer.

Ergonomics

The Bug is designed ergonomically to provide the user with the best possible sitting experience.

Flexible Table

The table can be rotated laterally to accommodate as many people as possible. You can have it close or a bit farther away from your body, or use it as an armrest, whether you are right- or left-handed. You also have a shelf under the table to prevent papers from blowing away.

Materials

Frame: Steel. Axalta Zerozinc - undercoating and Alesta AP (powder coating) RAL 9005.

Covering: Heat-treated Swedish pine.





THE BUG - SPECIFICATIONS



1 x chair
1 x table
1 x leg

Dimensions: 1635 * 650 mm

Weight: approximately 65 kg

Assembly

The Bug comes partially assembled. Instructions are included for final assembly.



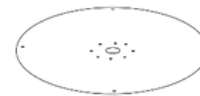
The Bug, for In-Ground Installation

A good choice for newly developed land. Traditional in-ground installation.



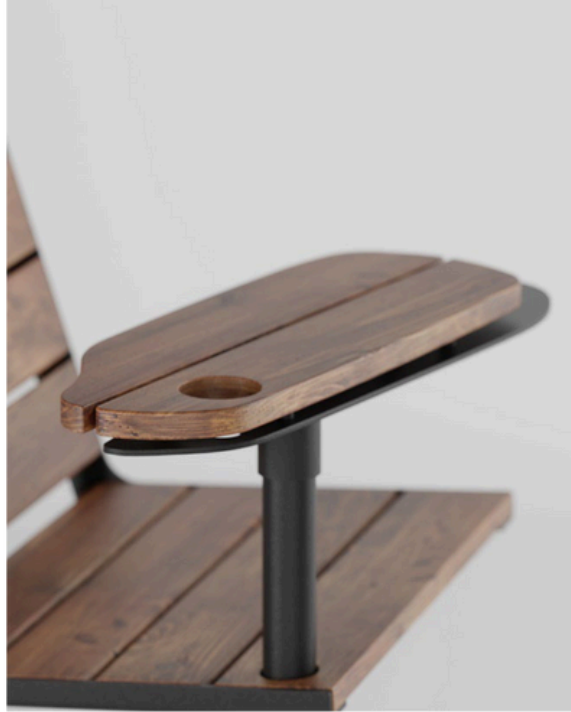
The Bug, for StopDigging Ground Screws

A good choice for semi-public and public environments. It minimizes the risk of theft, and no excavation or pouring is required. Read more at stopdigging.co.uk.



The Bug, for Terrace

A great choice for private environments. The chair is easy to move around, works perfectly on a terrace or a paved courtyard, and no intervention in the ground is needed. Weight of the foot: approximately 30 kg.



"We can't get enough of The Bug! It's not just a chair; it's a whole outdoor office. From the sleek design to the insane comfort, it's safe to say this chair has taken our workspace to the next level."



THE WHALE

Sunshade

What's innovative about The Whale is that you can project lectures outdoors even in bright sunlight. Under this pergola, you have shade while still enjoying natural daylight, creating an exceptional experience.

Projection

The glass panel serves as a classic whiteboard and projection surface, allowing the user to project lectures or write on it.

Good to Know

A building permit is required for The Whale. Documentation for the building permit application can be provided by Lovisa of Sweden for use in Sweden. Black-and-white presentations are more visible than colored ones.

Materials

Frame: Steel. Axalta Zerozinc - undercoating and Alesta AP (powder coating) RAL 9005.

Covering: Heat-treated Swedish pine.

Glass: 12.76mm special laminate, double-hardened, aluminum brackets RAL 9005.





THE WHALE - SPECIFICATIONS

You can customize The Whale according to your needs. Here are two examples:

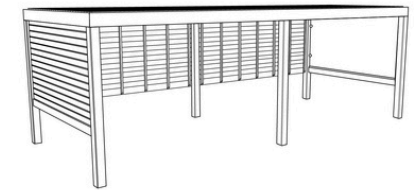
The Whale, small

- 1 x Starting Section 3*4 meters
- 1 x Wall Section 3 meters
- 1 x Wall Section 4 meters
- 1 x Glass Panel with associated fastening



The Whale, medium

- 1 x Starting Section 3*4 meters
- 1 x Extension Section 3*4 meters
- 1 x Wall Section 3 meters
- 2 x Wall Section 4 meters
- 1 x Glass Panel with associated fastening



Weight

The columns weigh about 60 kg each, the long roof edge profiles weigh about 55 kg each. The total weight for "T.W medium" is 1855 kg.

Assembly

The Whale comes as a construction kit. Instructions are included.

The Whale, for In-Ground Installation

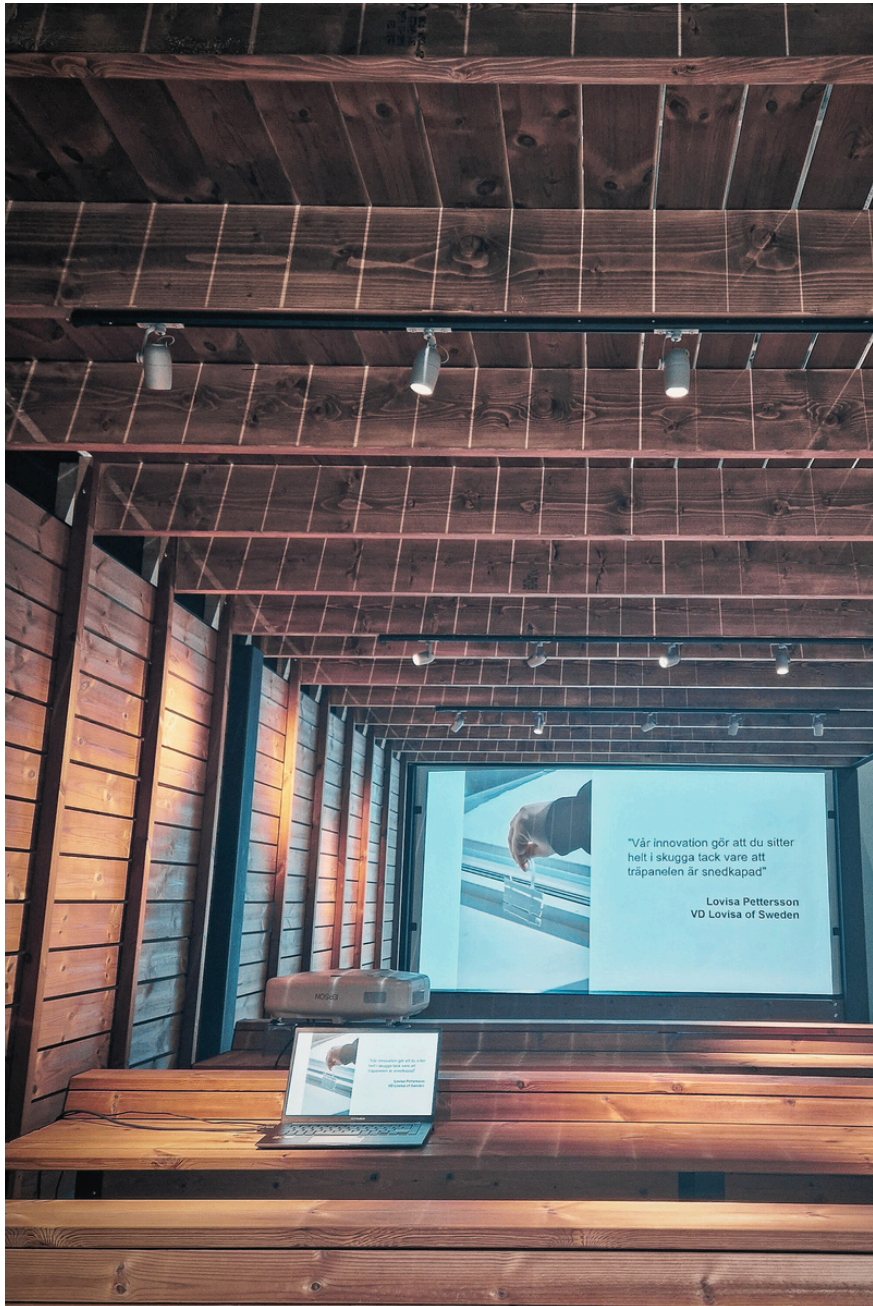
A good choice for newly developed land. Traditional installation.



The Whale, for StopDigging Ground Screws

A good choice for semi-public and public environments. It minimizes the risk of theft, and no excavation or pouring is required. Read more at stopdigging.co.uk.





PROJECT PRESENTATIONS OUTDOORS – EVEN IN SUNLIGHT!

It is now possible to enjoy outdoor presentations without distracting glare on screens. Thanks to our innovative design, we have developed a pergola that minimizes light penetration and creates a comfortable work environment. During the day, you can write on the whiteboard or project onto it if you have a portable projector. Black-and-white presentations are more visible than colored ones. In the evening, you can also watch movies, and colors will be clearly visible as well.

Important information:

To achieve the best results, it is crucial to position the pergola correctly in relation to the sun's position and surrounding conditions. At Lovisa of Sweden, we provide detailed technical information outlining how the pergola should be placed and what factors to consider. Feel free to contact us for more information.

This pergola is a completely new innovation and is currently in its testing phase. By choosing this solution, you'll be among the first to experience our groundbreaking technical solutions! Please note that optimal performance depends on the conditions of your intended site, and results may vary based on placement and environment.

THE ANT

Standing tables with Backrest

Two functions in a single piece of furniture. For instance, you can lean against the backrest of the standing table behind you and use the standing table in front of you as a desk.

Desktop Surface

Wide desktop surface with tip protection at the back edge - to prevent anything from falling- and to minimize the risk of someone leaning against your table.

Materials

Frame: Steel. Axalta Zerozinc - undercoating and Alesta AP (powder coating) RAL 9005.

Covering: Heat-treated Swedish pine.





THE ANT - SPECIFICATIONS

The Ant, small

Consists of 2 legs
Total length of 1400 mm
Height 1175 mm



The Ant, large

Consists of 3 legs
Total length of 2800 mm
Height 1175 mm



Weight

The Ant "large" weighs 109 kg.

Assembly

The Ant comes as a construction kit.
Instructions are included for final assembly.

The Ant, for In-Ground Installation

A good choice for newly developed land.
Traditional installation.

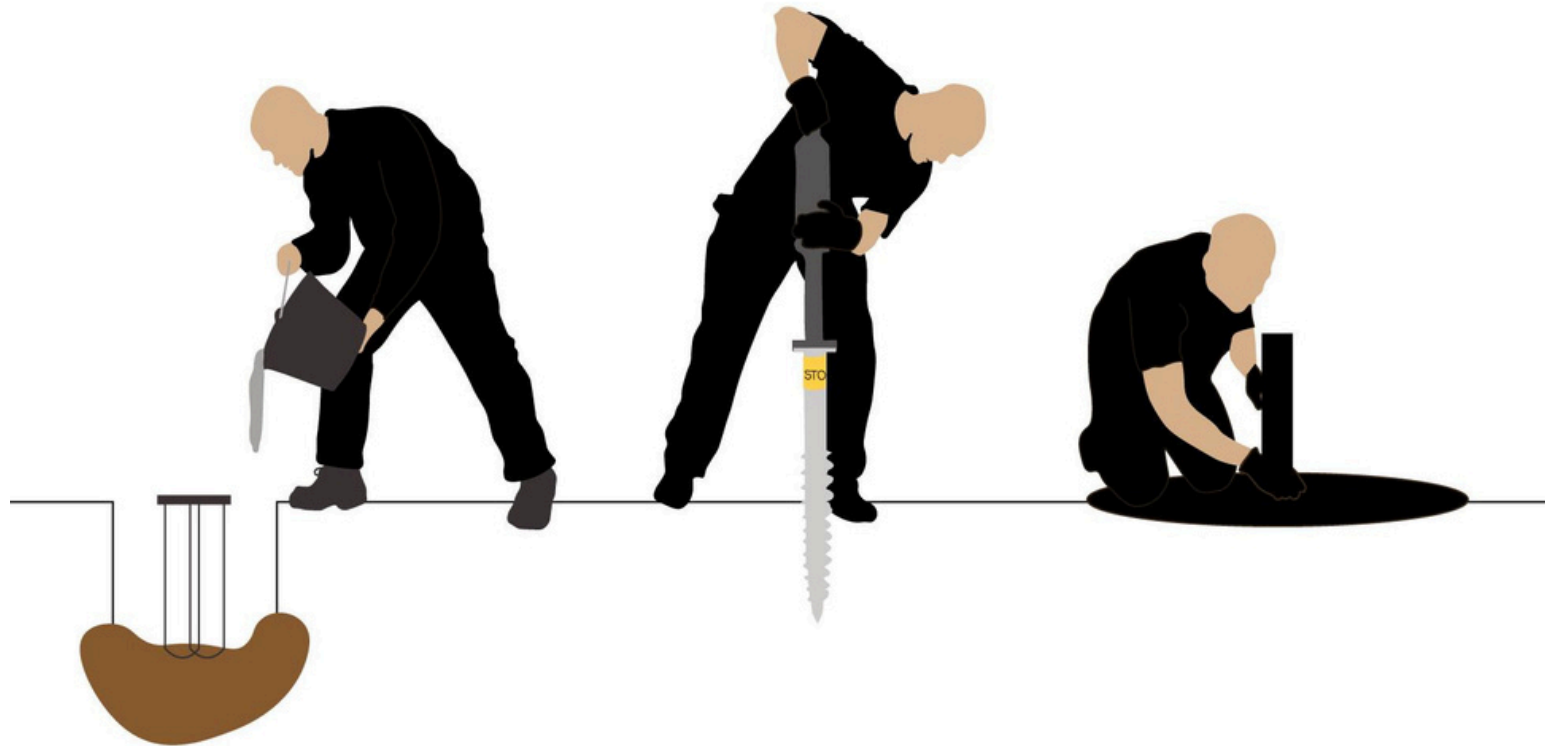


The Ant, for StopDigging Ground Screws

A good choice for semi-public and public environments. It minimizes the risk of theft, and no excavation or pouring is required. Read more at stopdigging.co.uk.



ALL OUR DIFFERENT FURNITURE LEGS



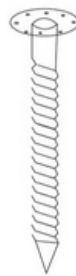
for In-Ground Installation



Traditional pouring.
Good choice for newly exploited land.

StopDigging Ground Screws

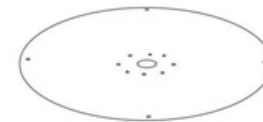
(offered by S.D dealers)



Good choice for semi-public and public environments. No digging or casting required.
We use "SGC"-screw for The Bug and The Whale and "SGP"-screw for The Ant.

Read more at stopdigging.co.uk.

for Terrace



Good choice for private environments. Optimal for terrace or paved courtyard.

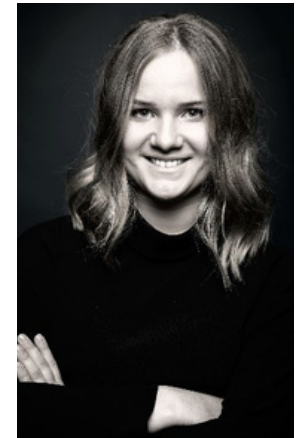
DESIGN AND INNOVATION



We develop innovations and solve problems.

We always work closely with the user, and we model in both 2D and 3D before we take a design from drawings to a prototype and finally to a finished product.

In the design process, we employ proven design methodologies where surveys, interviews, observations, and field studies inform our process and our outcome.



Lovisa Pettersson
Designer and CEO

INSPIRATION AND DESIGN LANGUAGE

Our "The Whale" can accommodate many people, much like a real whale. Together with the standing table, The Ant, they become a perfect outdoor meeting room. "The Ant" - that works in close-knit rows, collaborating as a group and carrying the most essential things around – the computer.



In old Swedish folklore, it was believed that the ladybug was a bearer of good luck, and that work would go exceptionally well and be facilitated if the beetle came flying early in the season. The beetle's shell protects it and makes it strong against weather, wind, and other elements it needs to shield itself from.

"The Bug" facilitates work and provides protection from the weather and wind. It can also unfold its wing, just like the ladybug."



"Our products are designed to be easily repaired, cleaned, and maintained so that they last for generations."

LOVISA OF SWEDEN

Lovisa of Sweden AB
Atlasgatan 8
802 86 Gävle, Sweden
+46 73 952 34 69
contact@lovisaofsweden.se

www.lovisaofsweden.se